

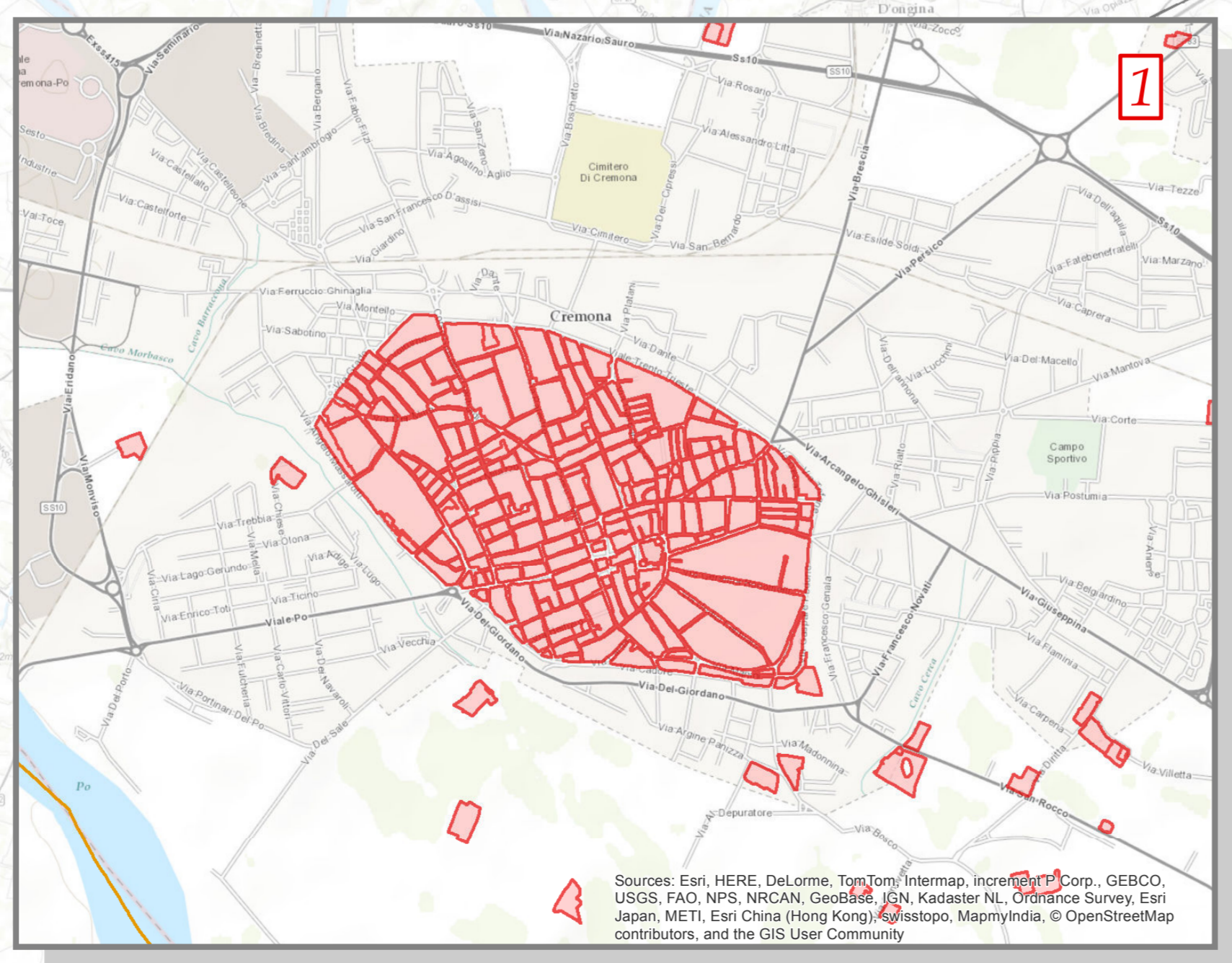
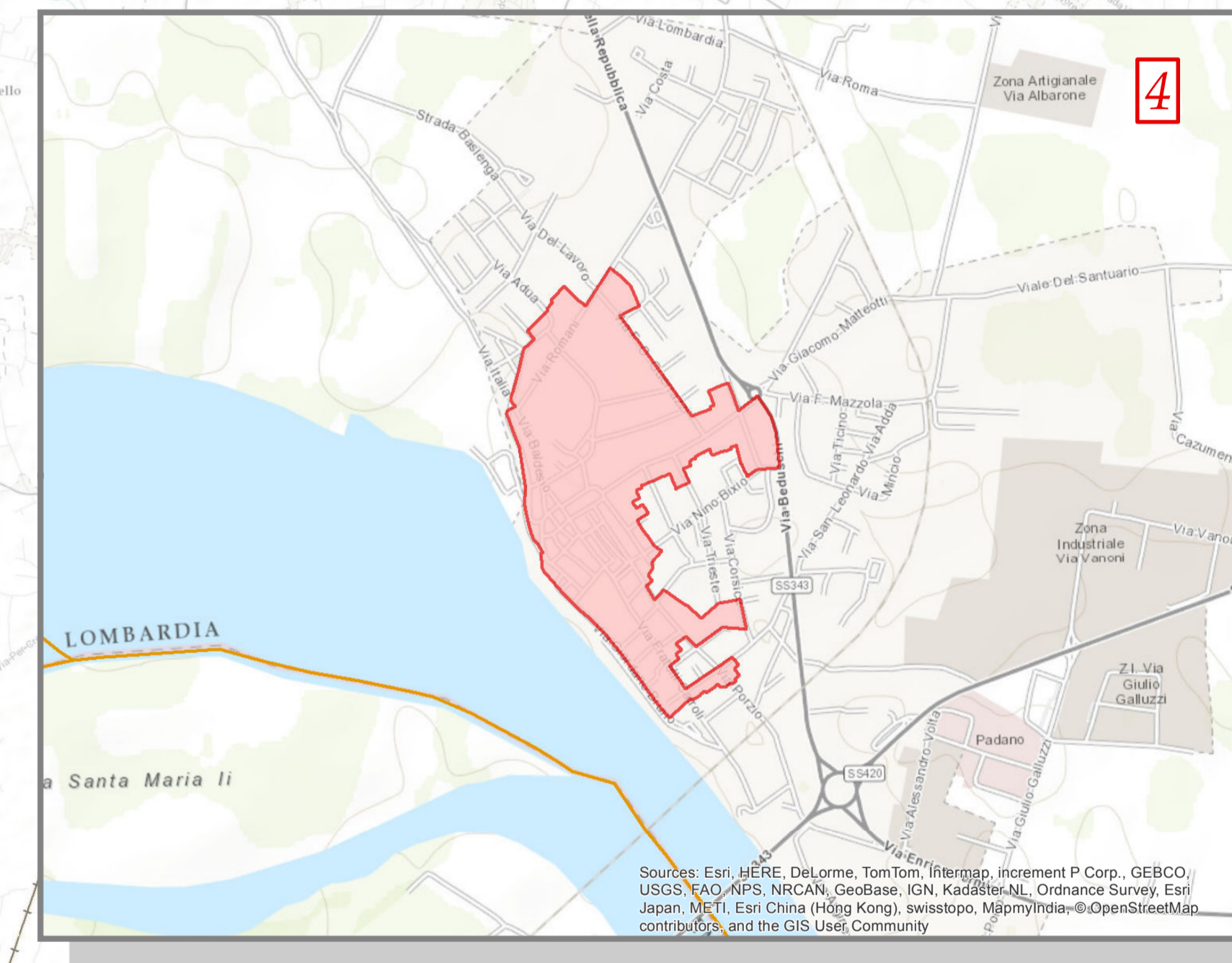
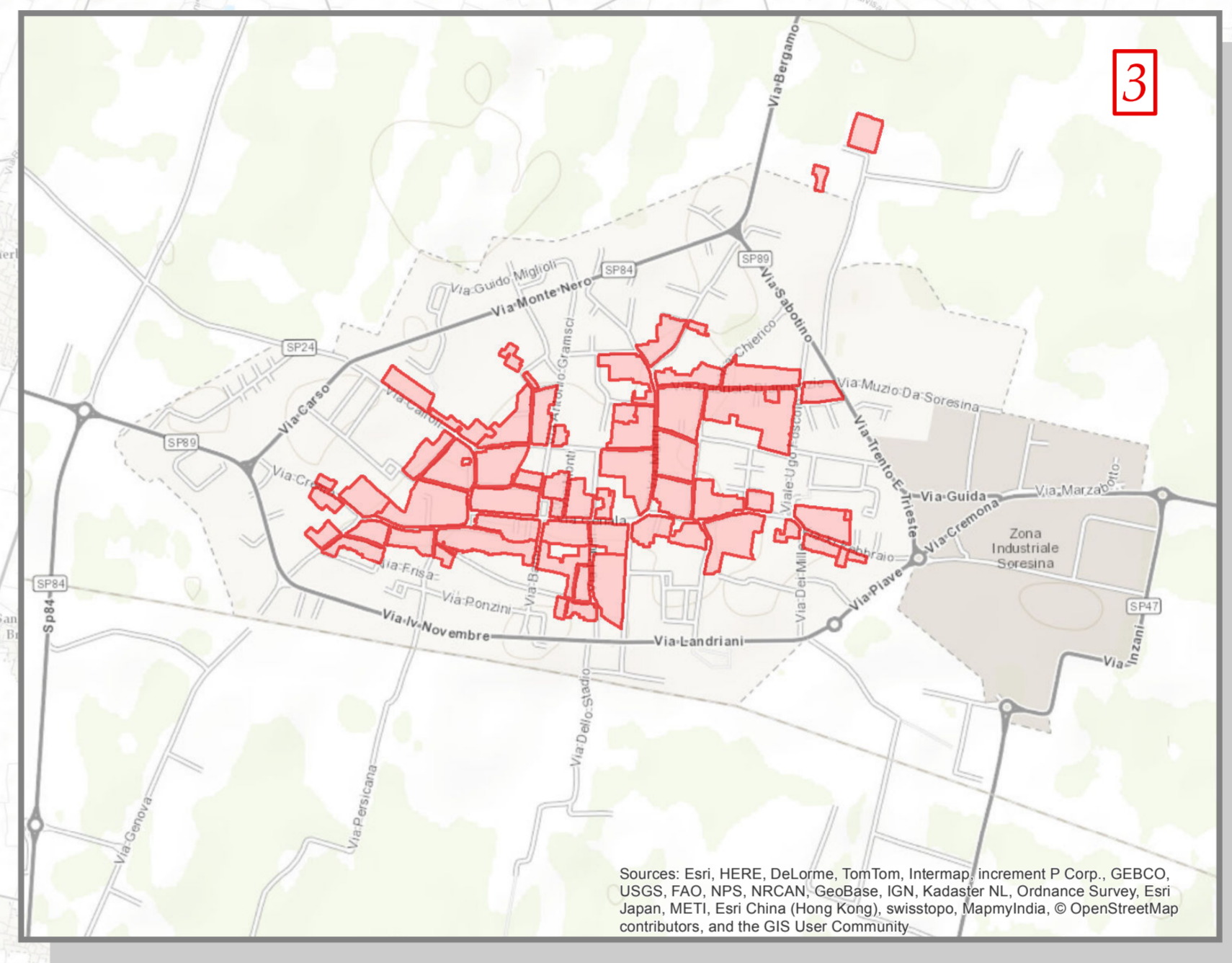
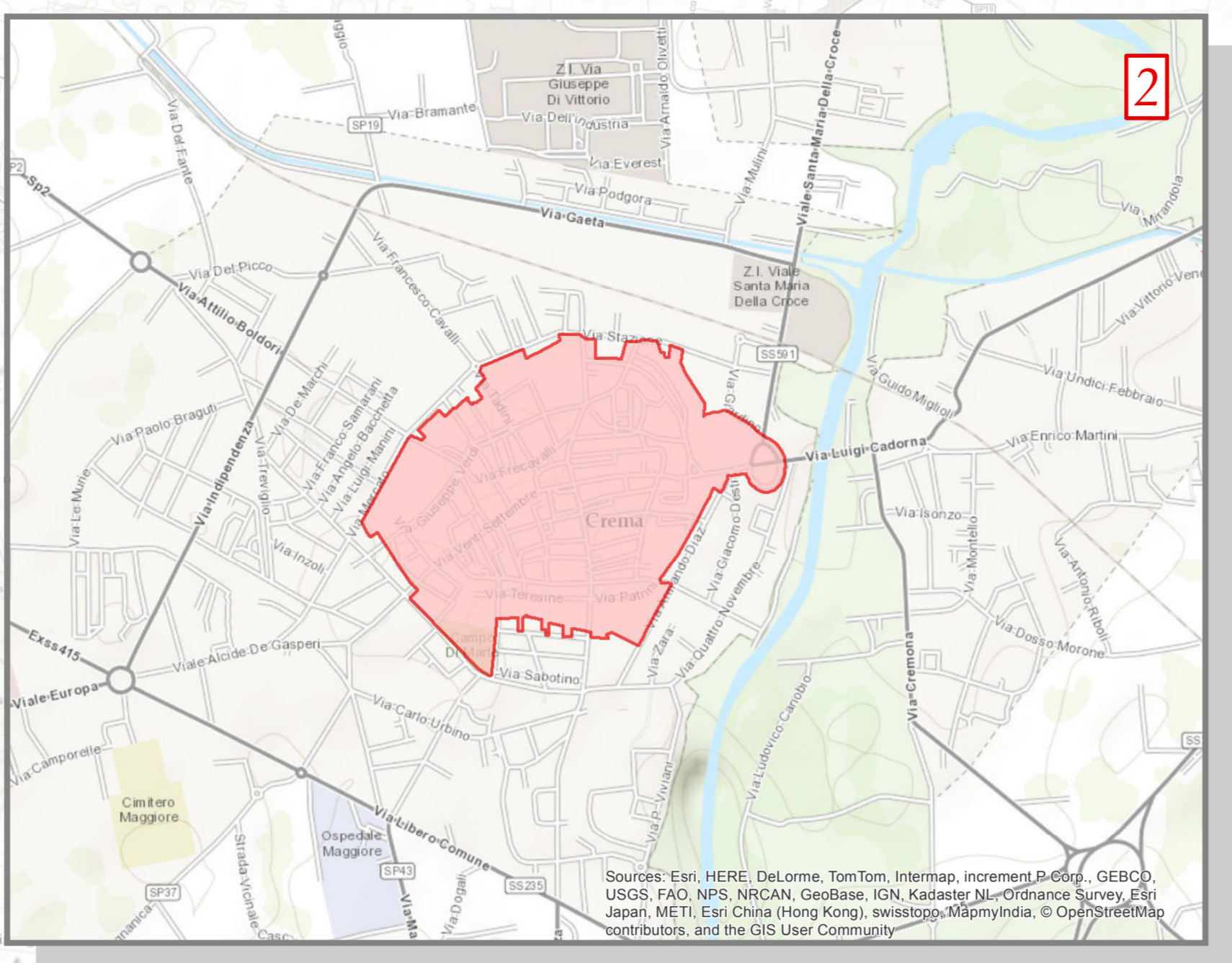
- 1 CREMONA
- 2 CREMA
- 3 SORESINA
- 4 CASALMAGGIORE


Area Gestione del Territorio
Settore Pianificazione Territoriale e Trasporti
Piano di Emergenza Sismica del
territorio provinciale
Carta delle "Zone Rosse"
 approvato con D.C.P. n° del



1:80.000

 luglio 2015

Sources: Esri, HERE, DeLorme, TomTom, Intermap, increment P Corp., GEBCO, USGS, FAO, NPS, NRCAN, Geobase, IGN, Kadaster NL, Ordnance Survey, Esri Japan, METI, Esri China (Hong Kong), Swisstopo, Mapbox, Mapbox, © OpenStreetMap contributors, and the GIS User Community